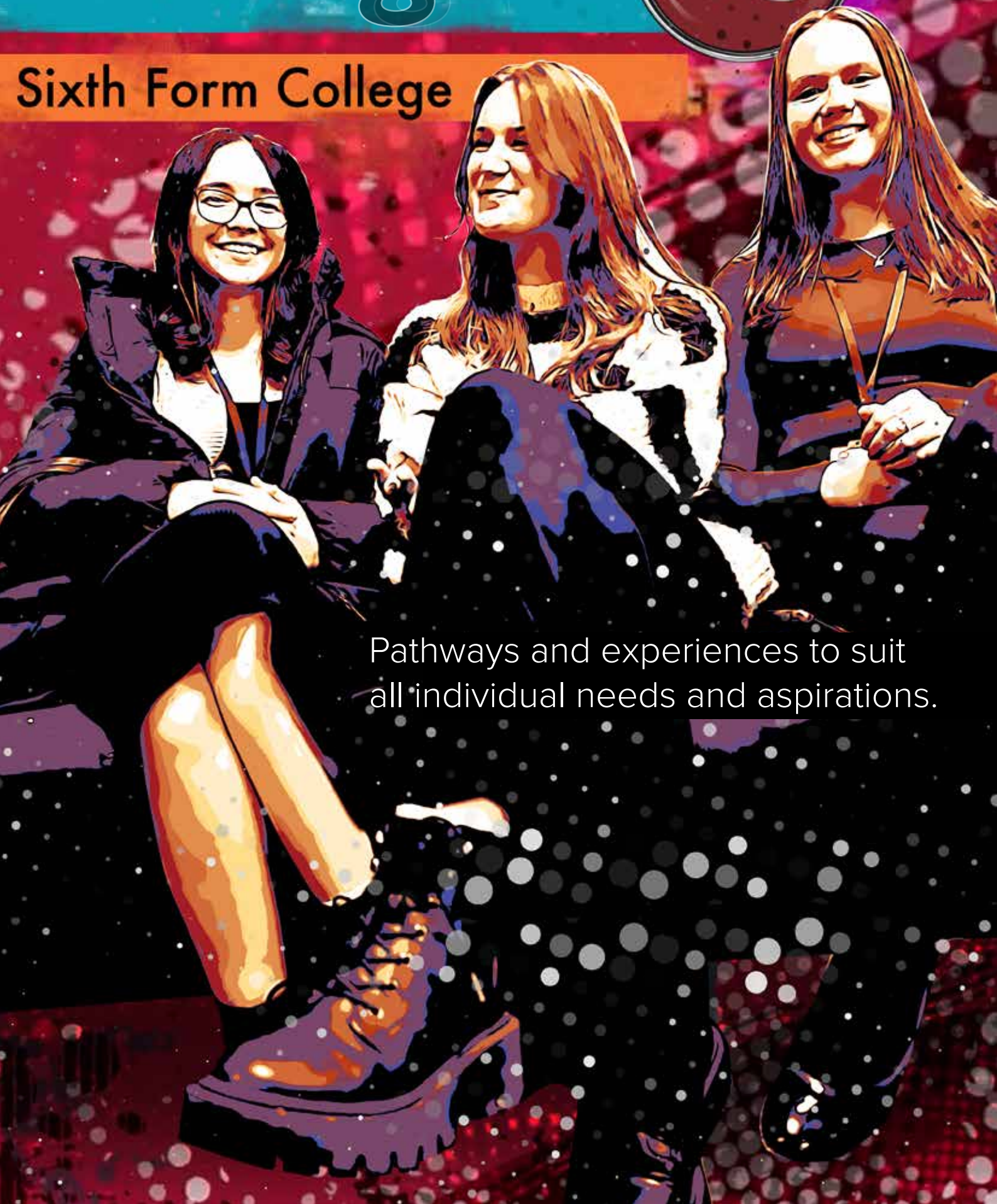


Alsager

A6

Sixth Form College



Pathways and experiences to suit
all individual needs and aspirations.

Welcome to

Alsager

Sixth Form College



Andrew Rayner, Director of Alsager Sixth Form College



Why Alsager Sixth Form College

Choosing where and what to study after Year 11 may be one of the biggest decisions you will have had to make so far in your life. So why should you choose Alsager Sixth Form?

As well as offering high quality teaching and personalised support and guidance, we place a high priority on the personal development of our young people so that they learn how to work and live together and how to enjoy healthy, active lives. This development of the whole person is evident throughout sixth form life, through a wide range of extra-curricular activities, a very comprehensive enrichment programme and an excellent system of pastoral care and support.

The proof of our success is evident not only from our excellent examination results but also from the fact that year on year, our students leave the Sixth Form fully equipped for the challenges and demands of life beyond Alsager.

Every year we also welcome a number of students who join us at 16 from other schools. They choose us because they are looking for a close knit community with a robust support network. The friendly welcoming atmosphere around the sixth form means that these students soon settle in and feel part of the community.

We look forward to welcoming both current Alsager students and new students into Year 12 next September and to working with you to help you achieve your goals.



Andrea O'Neill
Headteacher



Richard Middlebrook
Chief Executive Officer
The Cornovii Trust

Welcome to The Cornovii Trust



I am extremely proud to be Chief Executive Officer of The Cornovii Trust, our multi academy trust of local schools. 'Cornovii' is the ancient name given to the people of Cheshire, Shropshire and Staffordshire. That is the area our schools serve, we are a local trust providing real support, opportunities, experience and leadership for the communities and young people in these three counties. All our schools follow our model for success, high aspirations for all, high standards for all and continuous improvement for all.

Alsager Sixth Form College is the perfect example of this, it really is a beacon of excellence in every way when it comes to post 16 provision. I am so proud of the fact that A6 is a comprehensive 6th Form which is for everyone, regardless of their outcomes at the end of year 11.



Our Sixth Form College offers...

- High quality learning and teaching and a strong track record of academic success.
- Superb facilities including a dedicated state of the art Sixth Form study centre and 6th form café.
- Personalised student support and guidance to help every student achieve their very best.
- A wide range of courses including A-level, BTECs, and a Traineeship pathway.
- A superb range of subjects are offered ranging from Fine Art to Politics. A full list of the courses is available on the website.
- A comprehensive enrichment and extension programme to prepare students for life beyond the Sixth Form.
- The opportunity for all learners to take part in work experience, community volunteering and charity work during their time in the Sixth Form.
- Student Leadership Team roles.

Monitoring and assessment of progress

During the course of each academic year there are 3 assessment points when students' progress is assessed against their target grades. If students are not on target they are provided with extra support, advice and guidance by means of a thorough coaching, mentoring and support programme delivered by form tutors and subject specific support and coaching via their subject teachers.

"Learners benefit from a comprehensive programme of careers education information, advice and guidance which enables them to progress to higher education, training or full time employment after leaving the sixth form"
(Ofsted 2016)



Pathways and experiences to suit all individual needs and aspirations.



What our students say

- ◆ 'I attended another school and joined Alsager Sixth Form at the beginning of Year 12, which was quite daunting for me. I needn't have worried, as the pastoral team were really helpful and approachable, making me feel welcomed from the start.'
- ◆ 'The transition from High School to a further education setting can be overwhelming, but at Alsager Sixth Form I found that the support and encouragement from the sixth form team have made this transition more gradual and the experience really enjoyable.'
- ◆ 'I have really enjoyed my first year here at Alsager Sixth Form, I feel safe, included and part of a close knit team, together with other students. Everyone treats each other with kindness and respect. I can't wait to start Year 13 as a member of the Student Leadership Team.'
- ◆ 'Alsager Sixth Form has provided me with a variety of different opportunities from Oxbridge Summer Schools to Shadowing Schemes. Without the support of staff here, I would not have achieved my offer from Oxford University to student Medicine.'



Outside the classroom

We encourage our students to become involved in the life of the Sixth Form and in the school as a whole.

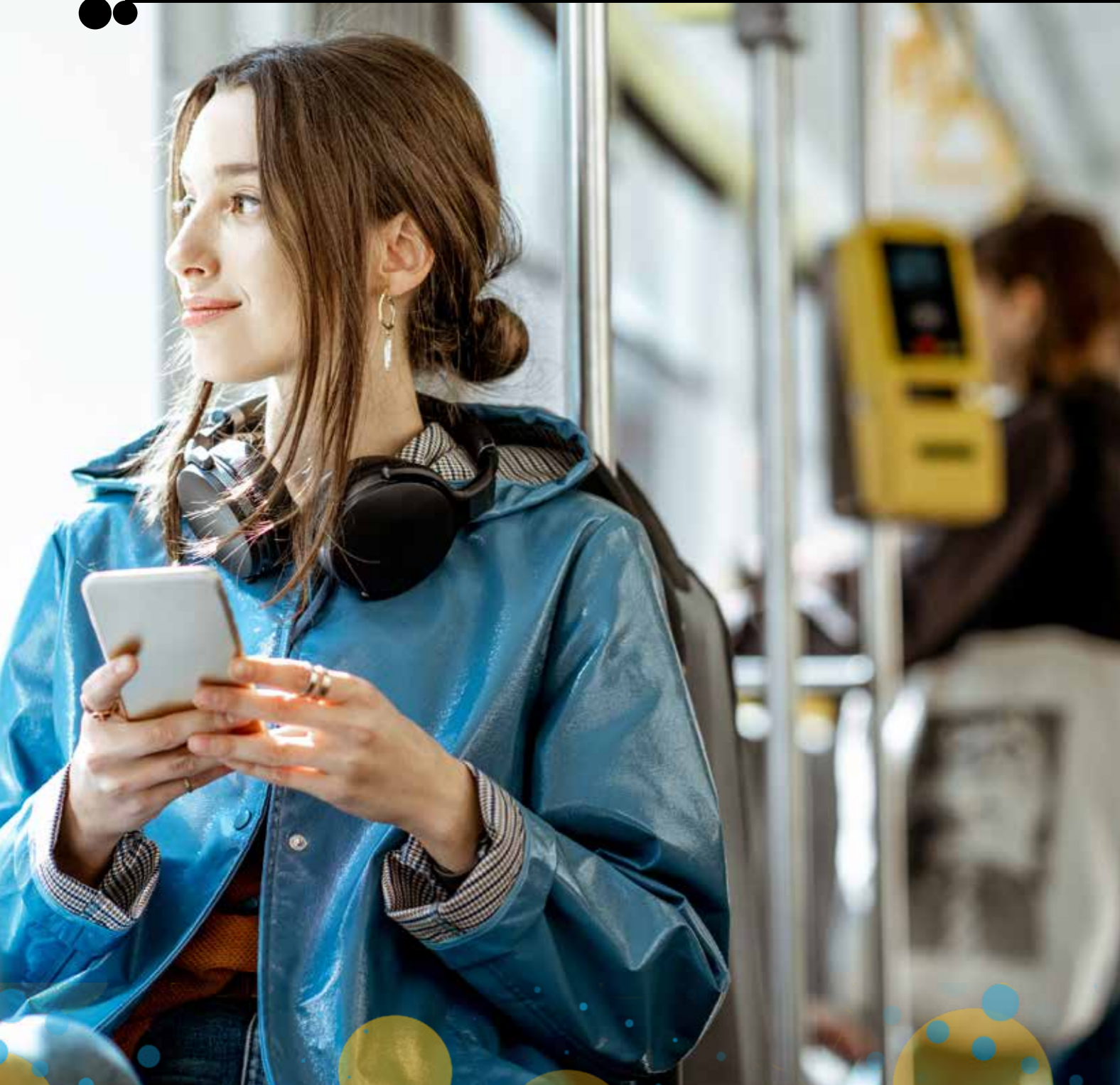
Beyond the classroom students represent their form on the Sixth Form Council and the Student Leadership Team. They are actively involved in supporting students in the lower school through peer mentoring and running workshops to help with target setting. Students work with Main School students to share tips on how to perform well in exams, as well as running revision skills sessions for parents. They also take part in Cafe Scientifique, debating clubs and High Ability Learners events with other local Sixth Forms.

Whilst ensuring a balance is struck between enriching their time in the Sixth Form and their studies, these provide great opportunities to gain skills and experiences to take in their next steps towards the rest of their careers.

The Sixth Form offers detailed PSHE and CEIAG programmes, preparing students for adult life. Issues covered include personal safety, driving skills, university application procedure and preparation for entering employment. Students also have access to the on-site leisure centre. There is a wide range of charity and volunteering opportunities and encouragement to undertake some work experience.

Our students have access to many opportunities to study and explore beyond the classroom. Students have the opportunity to take part in team building activity visits to countries including Tanzania, Costa Rica and Peru. As well as curriculum based trips to Berlin and London to name two.

Transport to Alsager 6th Form College



There are multiple transport options for students attending the Alsager Sixth Form.

Bus routes operated by the local authority are available to view in the transport letter on our website.

There are direct buses from Crewe, Newcastle-under-Lyme and Hanley bus stations.

You can also travel to Alsager Sixth Form via rail, as we are a 15 minute walk from Alsager Railway station, with direct trains running from Stoke and Crewe.



Dependent on where you live you may be entitled to a free bus pass.

Alsager



Alsager Sixth Form College

Pathways and experiences to suit all individual needs and aspirations.

Contact Information

This prospectus only gives a glimpse of what life is like at Alsager Sixth Form College. Many more details, which will be important to you including our full range of Post 16 courses, can be found on our website:
www.alsagerschool.org/sixthform

We keep our website up to date. You will often find it worthwhile checking it regularly and before ringing the College.

Other ways to make contact are:

by post:

Alsager Sixth Form College
Hassall Road
Alsager
ST7 2HR

by phone:

01270 871122

or by email:

sixthform@alsagerschool.org

Chief Executive Officer: Richard Middlebrook



The Cornovii Trust

The Cornovii Trust is a charity and a company limited by guarantee, registered in England and Wales with company number 8597784 and having its registered office at Hassall Road, Alsager, Cheshire ST7 2HR