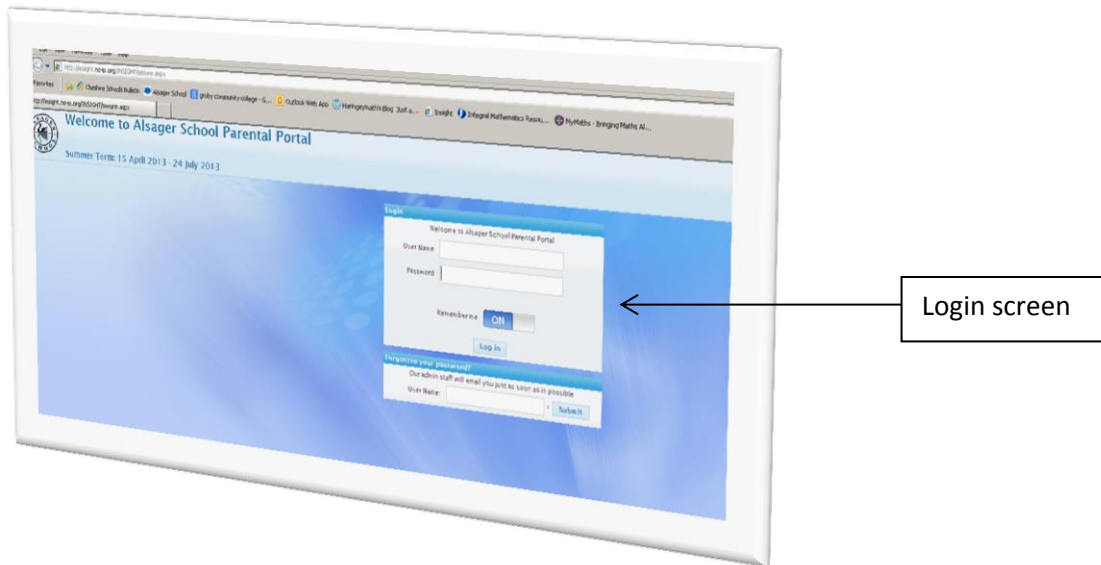


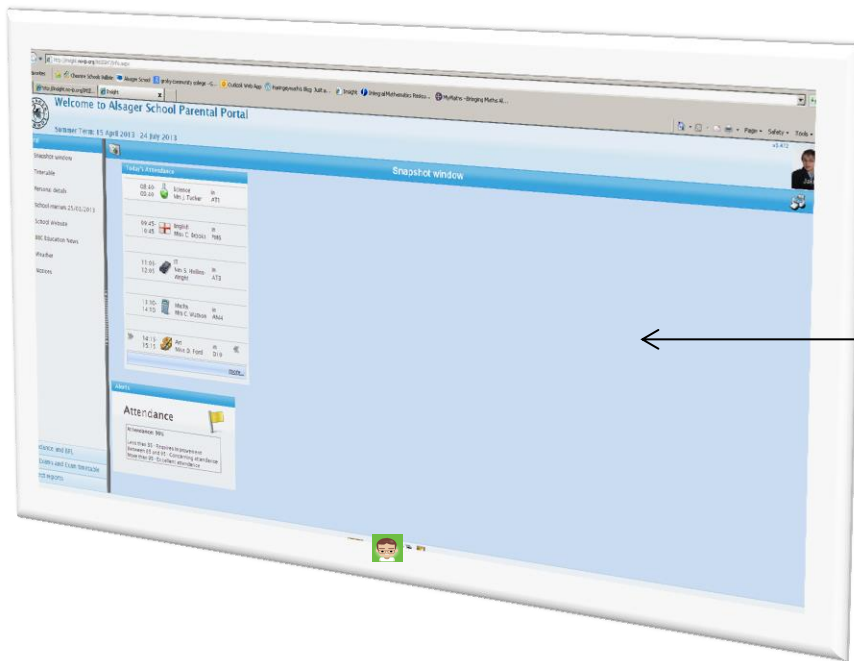
# Accessing the Parent Portal (Insight)

Once you have received your login details please visit the Insight website at <http://insight.no-ip.org/INSIGHT> to login.



After you login for the first time you will receive a second email supplying you with a one-time only usable pin number which you need to enter on the logon page. Please then follow the on screen instructions which will allow you to change your password at this point. Do please keep note of your username and new password for future access and remember that a new pin number will always be emailed back each time, after you logon.





← View once you have logged in.